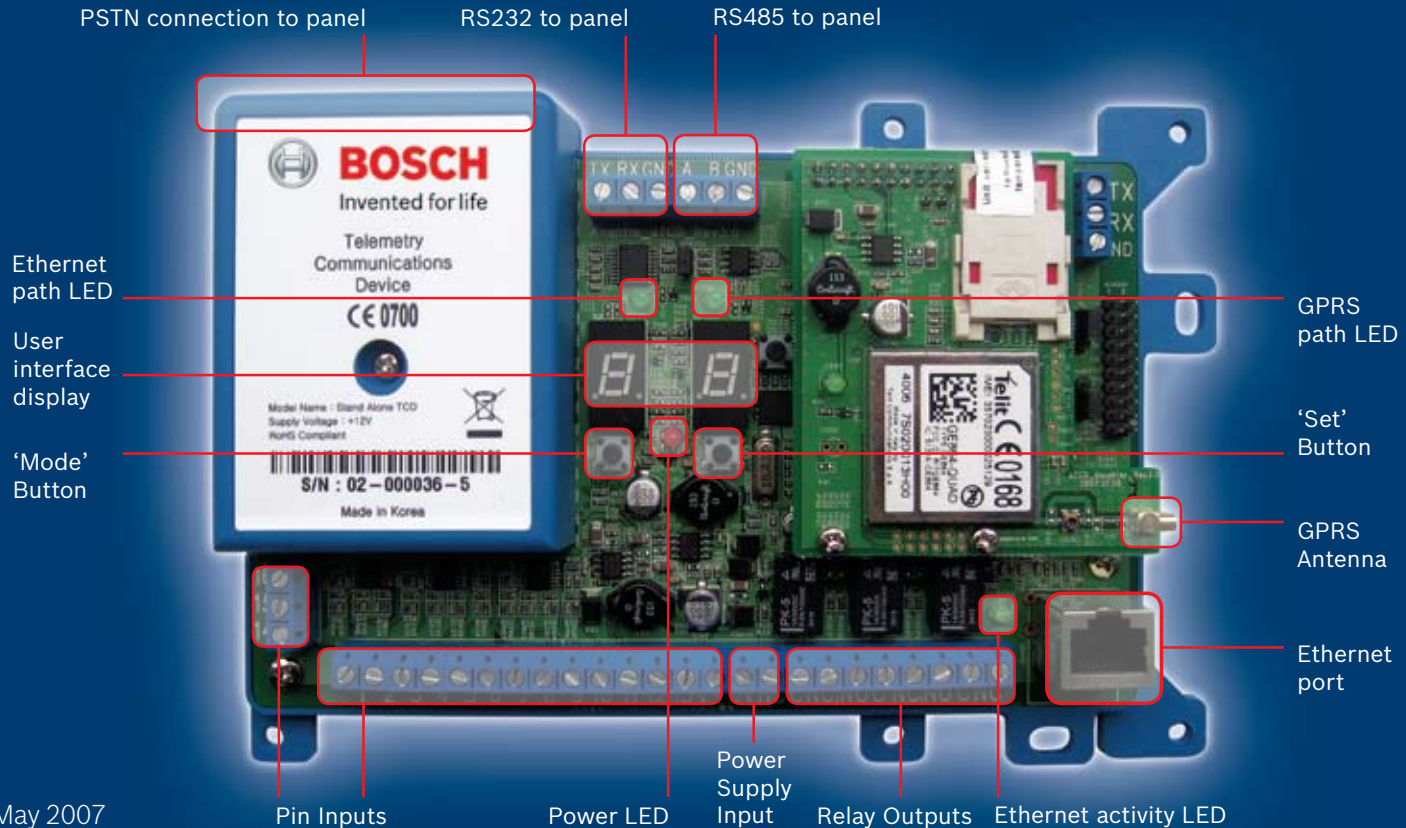


# Bosch Stand-Alone TCD Quick Start Guide

(Telemetry Communications Device)



Issue 1 | May 2007

**Bosch**  
Please refer to [www.boschsecurity.co.uk](http://www.boschsecurity.co.uk)  
for further information or call Technical on: **01895 878093**

**Emizon**  
Call the Emizon 21 Installer Commissioning Desk on: **0844 412 9009**  
from 8am to 6pm Monday to Friday. [www.emizon.com](http://www.emizon.com)

# Bosch Stand-Alone TCD Quick Start Guide

(Telemetry Communications Device)



Step	Instruction	Display	Look out for
<b>1.</b> <b>Fit TCD in panel</b>	Connect antenna, pin inputs, relays and power. Connect the network cable from TCD to the router.		Check against diagram above
<b>2.</b> <b>Boot up</b>	Power-up the TCD and wait 15 sec.  Lights on the GPRS and Ethernet activity LEDs indicate that the signalling paths are available and that the TCD is ready to be commissioned.		Steady light on the red power status LED. Flickering light on the Ethernet activity LED. Flashing green GPRS activity LED (reducing from every 1 sec to every 2 secs)
<b>3.</b> <b>IP path &amp; software update check</b>	Check for updates by pressing both Mode and Set buttons together for 10 seconds.		Establishes IP connection to Emizon server and checks for any firmware updates. If RR displayed then a firmware update has taken place, therefore please power off and power on TCD.
<b>4.</b> <b>Call ARC</b>	Contact ARC with the TCD serial number. The ARC will associate this TCD with the installation on their system and enter a command to activate it.		TCD serial number is printed on the front cover .  <b>Note:</b> For added security there is a time-out period of about 20min for ARC activation.
<b>5.</b> <b>Commission the panel</b>	Once the ARC has entered the commands to activate the system, press the Set button for 5 seconds.		User interface display alternates between: t1 and 01, then CA (Completely Activated) Alternate flashing decimal points indicates normal operation following a successful commission. The GPRS and Ethernet path LEDs will change to green to indicate that they are communicating with the Emizon Service Platform.  <b>Note:</b> <b>If you re-power the TCD you will need to repeat the ARC Commissioning process from step 4 above.</b>
<b>6.</b> <b>Test</b>	Send test alarms on both paths to ARC to ensure the system is fully activated and in service.		Trigger an alarm with the network cable connected to test the IP route. Repeat with the cable unplugged to test the GPRS route.